

The Gallery



SOUTHERN ALLEGHENIES
MUSEUM OF ART

January/February 2019 Issue LVIII

DIRECTOR'S DESK WITH VANESSA HOUSER



If the theme for Southern Alleghenies Museum of Art in 2018 was "change," the theme for 2019 is sure to be "growth." That transition started in 2018 and we have the staff and trustee support to stay on that trajectory. Of course, you cannot have one without the other and so it seems fitting we ended 2018 with a major change.

Jim Cayce has stepped down as President of SAMA's Board of Trustees after having served in that capacity for two years. Jim was a long-time board member before serving as President, and an even longer supporter of the Museum. During his tenure, Jim collaborated with trustees and then-Executive Director Gary Moyer to oversee the creation of SAMA-Bedford.

I am incredibly grateful to Jim for his time, guidance and patience. I have been fortunate to work closely with him during my transition to Executive Director.

To facilitate the growth happening at SAMA, the Board of Trustees elected Barry Newborn as President. Barry has been a trustee for seven years and a friend of SAMA for much longer. Barry contributes a wealth of business experience and a passion for the arts.

In 2019, SAMA endeavors to become a pillar in the communities we serve. From broadened activities and programming, creative thinking on sustainability opportunities and substantial and exciting acquisition opportunities, I am confident 2019 will be a momentous year in SAMA history.

I invite and encourage you to be a part of it! Our annual campaign and membership opportunities are available which provide event benefits and much more. This coming year is going to be full of ways to participate in the cultural legacy of Southwestern and Central Pennsylvania. Be sure to read the article about *Crystal Soirée*, happening later this month, and many other opportunities to support the arts in your community.

SAMA-BEDFORD TO "SPARKLE & SHINE" AT CRYSTAL SOIRÉE

SAMA-Bedford will celebrate its first fundraiser in January when it partners with the Bedford County Humane Society (BCHS) for its annual winter affair, *Crystal Soirée*. This year's event, "Sparkle & Shine," is a black-tie optional event that will feature first-class dining, a live band, silent and live auctions, and a New York City-style cabaret show featuring internationally acclaimed musician and composer Michael Kooman. *Crystal Soirée* will be held Saturday, January 26 at the luxurious Omni Bedford Springs Resort.

As partners in this exciting event, SAMA and the BCHS are pulling out all the stops to make *Crystal Soirée* a truly memorable occasion. The event will be a hallmark as one of the area's most important charity events as funds raised through the program will provide critical funding for both organizations.

"It is an incredible accomplishment that Debbie Grazier, Site Coordinator, and her staff at SAMA-Bedford are in a position to co-host an event of this magnitude," said Vanessa Houser, SAMA Executive Director. "It is humbling to see the outpouring of support for our newest museum to allow it to participate in such a fundraiser within its first year of operation."

The Museum has a long history of community partnerships. In recent years, SAMA has worked with local sports teams to offer special student art exhibitions, cooperated with local galleries and museums on community events, hosted exhibitions of local arts groups, and partnered with and raised money for healthcare organizations and advocacy groups in the fight against breast cancer.



Michael Kooman

A highlight of the event will be a cabaret-style performance by Altoona native Michael Kooman, the acclaimed musician and composer behind the hit Disney Junior animated series *Vampirina*. Upon his graduation from Altoona Area High School, Kooman continued his studies at Carnegie Mellon University, where he met his songwriting partner, Christopher Dimond. The two found perfect harmony as Kooman's music combined with Dimond's lyrics to create musical magic.

The two have found success in musical theater with a long list of shows including *Homemade Fusion*, *Dani Girl*, *Judge Jackie Justice* and *Orphie and the Book of Heroes*. Their musical, *The Noteworthy Life of Howard Barnes*, recently finished a run at Seattle's Village Theatre, and their most recent musical, *Romantics Anonymous*, debuted to rave reviews and sold-out audiences at Shakespeare's Globe this fall. Kooman may be best known, however, for *Vampirina*, an animated series for which he has written more than 100 songs. The show debuted in the fall of 2017 and has been renewed for a third season by Disney Junior. *Vampirina* reaches more than 49 million viewers in 115 countries. Kooman's performance at *Crystal Soirée* will feature music from throughout his career and will include a surprise visit by a vocalist from New York City's theater scene.

The BCHS has partnered with numerous community organizations throughout the years for its annual fundraiser, but this year selected SAMA to partner with on the event.

"I am very excited about our partnership with SAMA," said H. Dean Lemley, a member of the BCHS Board of Directors for more than twelve years. "As a board member of both not-for-profits, and with a love for both animals and art, I have a personal and clear understanding of the needs of these two organizations. Both not-for-profits have new buildings



"Crystal Soirée" continued on page 2



BENZEL'S

**THE GALLERY IS PROUDLY SPONSORED BY
BENZEL'S BRETZEL BAKERY, INC.**

IN THE NEWS

- SAMA-Ligonier Valley recently had acoustic tiles installed in the gallery. Twenty panels, designed to match the interior of the gallery walls, were installed by Pittsburgh Prosound and will offer a 60% reduction in noise level. The project was made possible through a grant from the Richard King Mellon Foundation.
- SAMA lost a dear friend with the passing of Helen Thorne. Helen was a talented artist, a longtime member of the Ligonier Valley Auxiliary, and a past Garden Party chair. The Museum sends its condolences to her family and friends.
- SAMA-Bedford held a ribbon-cutting for its new gift shop in the fall. Open during regular Museum hours, the gift shop offers an interesting mix of art, apparel, books and more.
- The Ligonier Valley Museum will host a Winter Workshop with artist Doreen Currie on January 26. Currie, an award-winning artist whose plein air paintings were recently on view at the Museum, will offer demonstrations and tips for still life painting. The workshop costs \$30 per person and will be held from 11 a.m. to 4 p.m. Call the Museum for reservations or additional information.
- SAMA is in the second year of a partnership with WJAC-TV that provides the Museum a significant presence on television. The package allows the Museum to advertise and increase exposure for its exhibitions and events. The Museum is grateful to WJAC-TV for its interest in the Museum and its support of the arts.
- Two SAMA trustees have recently been in the news. Mari-Pat Beene and Steve George were both named among the "Top Influential People" by the *Bedford Gazette*. SAMA congratulates them on the honor.



SAMA-LIGONIER VALLEY HOSTS RECEPTION

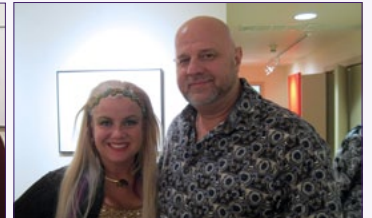
Nearly 200 patrons came to SAMA-Ligonier Valley in November to celebrate the opening of *Southwestern Pennsylvania Council for the Arts 23rd Annual Regional Juried Art Exhibition*. Jackie Moreno of Greensburg won First Prize for her oil-on-panel, *Girl with Blue Turban*. The exhibition features 67 works in a variety of media and will remain on view through February 3.



Doreen Currie, Jackie Moreno, Paul Sirofchuck, Susan Pollins and Jan Landini were award winners present at the reception. Moreno won First Prize honors



Bonnie Hoffman and Janet Bucciarelli



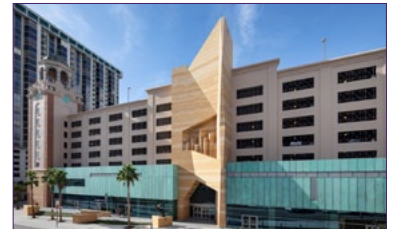
Chantel Ventura and Brian Gates

JOIN SAMA IN THE SUNSHINE STATE

SAMA has the cure for your winter blahs. The Museum is organizing a trip to sunny St. Petersburg, Florida for February 25 through 27.

The fun begins Monday, February 25 with a cocktail reception hosted by Barbara and Marty Kooman at the Museum of Fine Art on the veranda overlooking the harbor. On Tuesday, the SAMA group will be treated to a tour and lunch with Tom James, founder of Raymond James Financial and a renowned collector of fine art. After spending the afternoon at the brand-new James Museum of Western and Wildlife Art, we'll finish the day at a cocktail party hosted by Trustee Emerita Joan McCreary and her husband, Harry.

On the final day, the group will tour fabulous museums such as the Salvador Dali Museum, The Museum of Fine Art, and the Chihuly Collection at the Morean Arts Center. Cost is \$750 per couple, which includes all museum admission, lodging at the Hampton Inn, and local transportation. Airfare is not included. Space is limited, and reservations are required by January 31 by calling the Museum at (814) 472-3920.



The newly opened James Museum of Western and Wildlife Art

STUDENT ART RETURNS TO SAMA

Artists of the 21st Century, SAMA's popular student art exhibitions, will return to the Loretto and Ligonier Valley museums this winter. Now in its 21st year, the dual exhibition is held in conjunction with National Youth Art Month and features hundreds of student-created art and provides an opportunity for young artists to see their works professionally hung in a gallery setting. Students in Bedford, Blair, Cambria and Somerset counties will have their works shown at SAMA-Loretto from February 1 to March 23, while SAMA-Ligonier Valley will display artwork from students in Fayette and Westmoreland counties from February 15 to April 21. Receptions will be held at both museums, with Loretto's scheduled for February 9 and Ligonier's on March 3. The *Artists of the 21st Century* exhibitions are sponsored by WJAC-TV.

CRYSTAL SOIRÉE (CONTINUED FROM PAGE 1)

and with growth come expenses.

"January 26 will be a night to Sparkle & Shine. *Crystal Soirée* at the Omni Bedford Springs Resort ballroom has always been a big party night, and our 2019 event will bring the same excitement our guests have come to expect. We invite everyone to come celebrate with these two outstanding organizations and help lift us into the future."

Crystal Soirée will be held from 5:30 to 11 p.m. on Saturday, January 26 at the Omni Bedford Springs Resort. Tickets are \$150 per person and are available by calling SAMA at (814) 589-3020 or on the Museum's website, www.sama-art.org. Sponsorship and advertising opportunities are available. Special room rates for Omni Bedford Springs Resort also are available by calling the Museum. For more information, please visit www.crystalsoiree.com.

SAMA-ALTOONA HOSTS LUNCH A L'ART



Sarah Wolf Newlands speaks as Doug Wolf looks on

Installation artist Sarah Wolf Newlands returned to SAMA-Altoona in December to speak at a Lunch a l'Art. Newlands' two-part exhibition, *Keeping House*, features approximately 50 works by the Blair County native and focuses on the artist's sculptural installation and community recipe print project. The exhibition will remain on view through January 12.

THINK PINK

SAMA-Altoona celebrated its 16th annual fundraiser in record fashion. This year's edition of *Think Pink*, sponsored by Michelle and Steve Passarello and Passarello Law Offices, featured a new format, including a riveting performance by the dueling pianos group, The Flying Ivories, and a new setting at Hollidaysburg's luxurious Blairmont Club. *Think Pink* was chaired by Jen Daniels and Lindsey Kranich.

The event resulted in record attendance, with more than 200 guests participating, and record proceeds. *Think Pink* raised approximately \$50,000 for the Museum and SAMA donated nearly \$5,000 to its *Think Pink* partners, UPMC Altoona's Magee-Womens Specialty Center and UPMC Hillman Cancer Center. Since 2013, SAMA has donated approximately \$20,000 to various treatment programs and educational initiatives in the fight against breast cancer through *Think Pink*.

"This year's *Think Pink* was an awesome experience for our patrons," said SAMA-Altoona Coordinator Barbara Hollander. "We continue to receive compliments on the event and I anticipate an even larger crowd for next year. In terms of money raised, attendance, sponsorships, silent auction and the fun factor, this has been our most successful event. The Blairmont Club was a magnificent venue and we invite everyone to save November 1, 2019 on their calendar for a repeat."

Photos courtesy of Chuck Meyers/Two 20 Studios



Lindsey Kranich, Michelle Passarello, Vanessa Houser, Barbara Hollander and Jen Daniels



The Flying Ivories entertained guests at The Blairmont Club



Debbie Brandimarte and Laura Wray



John Beyer and Neil Hollander



Kashana Kopac, Nada K'hour, Celeste Bohn and Jim Cayce



Michael Kranich, Sr., Bill Ward, Jr. and Charles Kranich



Tara McCaulley and Laura Degol



Robbie Okonak, Tommy Irwin, Brian Barcaro and Brian Irwin



Matt Parsons, Laura and Sean Burke, and Alanna Parsons



Jody Black and Ashley Burgmeier



Kerrie Kinzie and Kim Van Buren



Heather Palau, Alexandra Degol and David Degol



Michelle and Steve Passarello, Brian Gates and Chantel Ventura



Think Pink chairs Lindsey Kranich and Jen Daniels



The Bedford Museum offered an interesting art experience for children during its *Artistic Expressions of the Southwest Spirit* exhibition. Nicole Clark led a workshop that introduced children to the history and symbolism behind dreamcatchers while providing them an opportunity to create their very own. As part of the workshop, children also learned about and created their own piece of pottery.

BEDFORD MUSEUM HOSTS ITS SWEETEST KIDS' CLASS YET



SAMA-Bedford's most recent children's workshop resulted in art that was visually stunning and utterly delicious. In the fall, the Museum hosted two gingerbread house holiday workshops in the Nicole Renae Clark Creativity Studio. Children ages 6 to 11 had the opportunity to create, decorate and take home their very own gingerbread house, as well as write and mail a letter to Santa. The classes were led by Bedford artists Nicole Clark, Heather Kolander and Dorothy Vensel.

BIENNIAL 2018

SAMA-Loretto celebrated *Biennial 2018* with a reception in November. Always one of the Museum's most anticipated exhibitions, the Biennial consistently features works by the finest contemporary artists in Pennsylvania. This year's exhibition, on view through January 19 in the Sullivan Gallery, offers 78 works by 62 artists. Be sure to check it out before it closes, and don't forget to vote for your favorite work for the Barbara and Ed O'Brien People's Choice Award.



Barb O'Brien, Dan Helsel, Jana Sidler, Jim Cayce, Ed O'Brien and Glenda Forosisky



Biennial 2018 award winners Ron Donoughe, Joseph Ryznar, Dan Helsel, Dave Hammaker and Stuart Thompson. Third Place winner Kevin O'Toole was not present



Chantel Ventura and Ron Donoughe, winner of the Chantel Ventura First Place Award



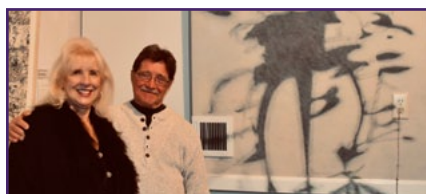
Nora and Stuart Thompson in front of Mr. Thompson's *Reality Comes and Goes*, which won the Deborah and R. Jeffrey Kimball Best of Show Award



John Paul and Vanessa Houser



Robin Grass



Marian Morgan and Joseph Ryznar, winner of the Marian and Dr. Owen K. Morgan Third Place Award



Marcene Glover and Kevin Kutz



Sarah Smicker



Allen Capriotti



Stephanie Sheridan

DON'T MISS THESE UPCOMING EVENTS AT THE SOUTHERN ALLEGHENIES MUSEUM OF ART

JANUARY

- 11 *Theaters of the Imagination: Early Works of Colleen Browning* opens (JTN)
- 12 *Keeping House: Prints and Sculpture by Sarah Wolf Newlands* closes (ALT)
- 17 Lunch a l'Art with Lisa Bane (LV)
- 18 *Billie Hollen: She Comes in Colors* opens (ALT)
- 19 *Biennial 2018* closes (LOR); *Portraits Past and Present: Selections from the Permanent Collection* closes (LOR)
- 26 Crystal Soirée (BED); Winter Workshop with Doreen Currie (LV)

FEBRUARY

- 1 *Artists of the 21st Century* opens (LOR)
- 3 *Southwestern Pennsylvania Council for the Arts 23rd Annual Juried Art Exhibition* closes (LV)
- 9 *Artists in Our Midst: Art in Common Annual Juried Exhibition* closes (ALT); Reception for *Artists of the 21st Century* (LOR)
- 15 *Artists of the 21st Century* opens (LV)
- 21 Lunch a l'Art with Melissa Davenport (LV)
- 22 *Gary Jurysta: Driven to Abstraction* opens (ALT)

SAMA SITES

ALTOONA

Brett Building
1210 11th Avenue
Altoona, PA 16601
Ph: (814) 946-4464
altoona@sama-art.org

BEDFORD

Anderson House
137 E. Pitt St.
Bedford, PA 15522
Ph: (814) 589-3020
bedford@sama-art.org

JOHNSTOWN

Pasquerilla Performing Arts Ctr.
450 Schoolhouse Road
Johnstown, PA 15904
Ph: (814) 269-7234
Fax: (814) 269-7236
johnstown@sama-art.org

LIGONIER VALLEY

One Boucher Lane
Route 711 South
Ligonier, PA 15658
Ph: (724) 238-6015
Fax: (724) 238-6281
ligonier@sama-art.org

LORETTO

Saint Francis University Mall
P.O. Box 9
Loretto, PA 15940
Ph: (814) 472-3920
Fax: (814) 472-4131
loretto@sama-art.org